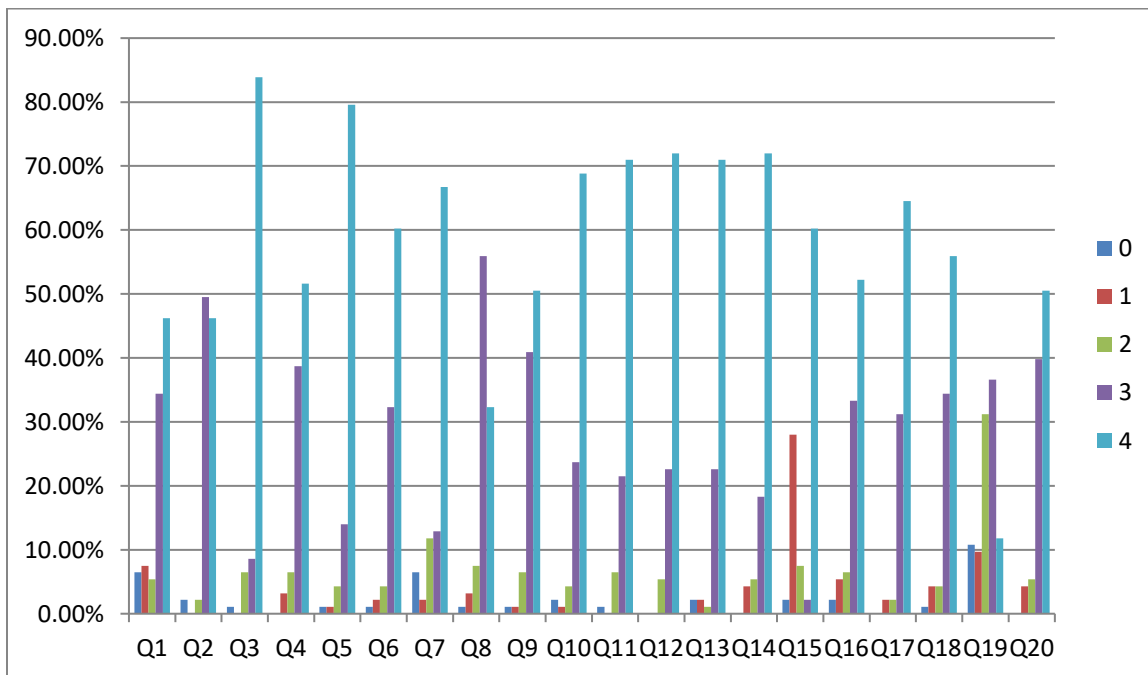


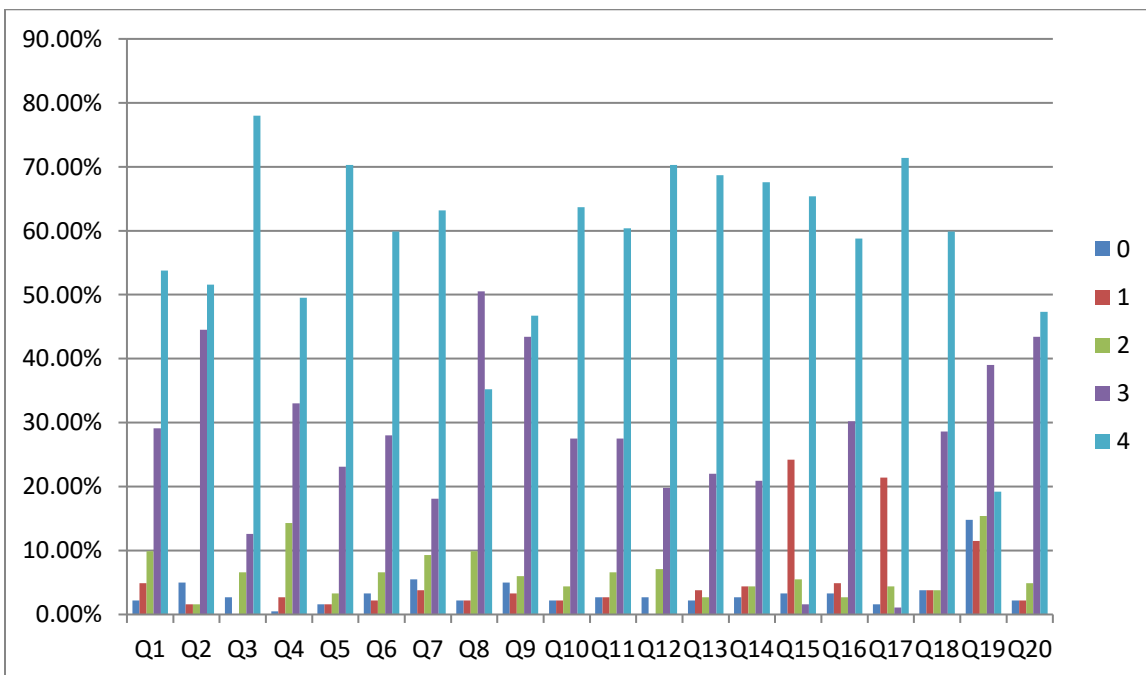
### STUDENTS FEEDBACK RESULTS, 2017-18

Q	0	1	2	3	4	Mean
1	6.5%	7.5%	5.4%	34.4%	46.2%	3.06
2	2.2%	0%	2.2%	49.5%	46.2%	3.38
3	1.1%	0%	6.5%	8.6%	83.9%	3.74
4	0%	3.2%	6.5%	38.7%	51.6%	3.39
5	1.1%	1.1%	4.3%	14%	79.6%	3.70
6	1.1%	2.2%	4.3%	32.3%	60.2%	3.48
7	6.5%	2.2%	11.8%	12.9%	66.7%	3.31
8	1.1%	3.2%	7.5%	55.9%	32.3%	3.15
9	1.1%	1.1%	6.5%	40.9%	50.5%	3.39
10	2.2%	1.1%	4.3%	23.7%	68.8%	3.56
11	1.1%	0%	6.5%	21.5%	71%	3.61
12	0%	0%	5.4%	22.6%	72%	3.67
13	2.2%	2.2%	1.1%	22.6%	71%	3.60
14	0%	4.3%	5.4%	18.3%	72%	3.58
15	2.2%	28%	7.5%	2.2%	60.2%	2.90
16	2.2%	5.4%	6.5%	33.3%	52.2%	3.29
17	0%	2.2%	2.2%	31.2%	64.5%	3.00
18	1.1%	4.3%	4.3%	34.4%	55.9%	3.40
19	10.8%	9.7%	31.2%	36.6%	11.8%	2.29
20	0%	4.3%	5.4%	39.8%	50.5%	3.37



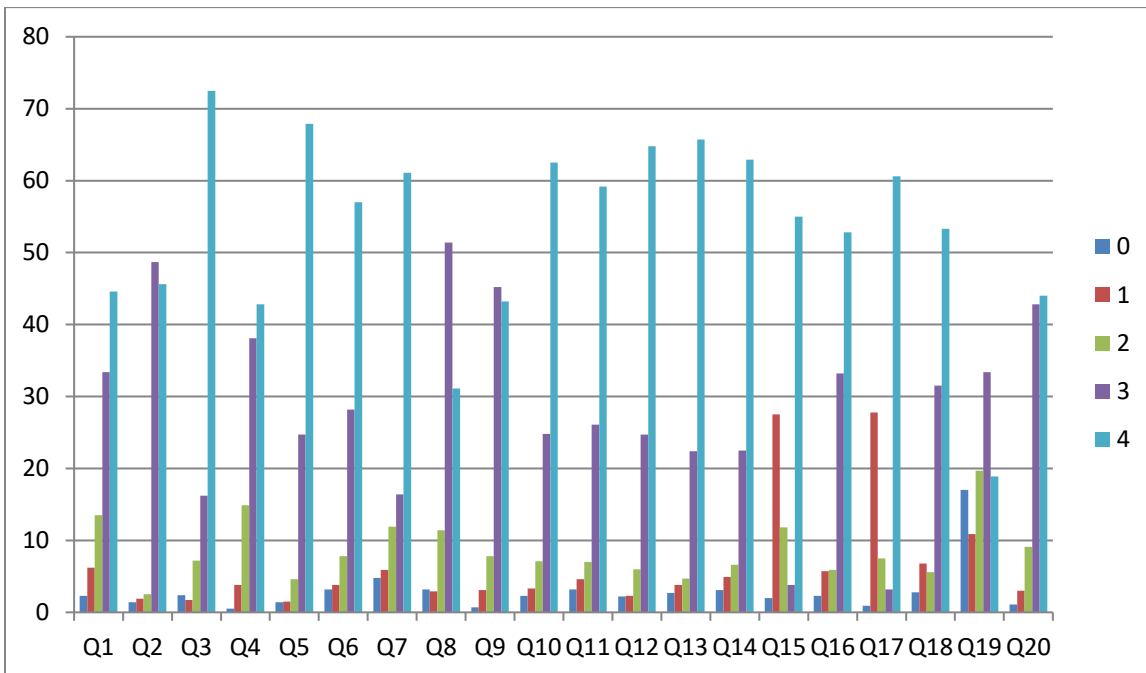
2018-19 STUDENTS

Q	0	1	2	3	4	Mean
1	2.2%	4.9%	9.9%	29.1%	53.8%	3.27
2	5%	1.6%	1.6%	44.5%	51.6%	3.45
3	2.7%	0%	6.6%	12.6%	78%	3.63
4	.5%	2.7%	14.3%	33%	49.5%	3.28
5	1.6%	1.6%	3.3%	23.1%	70.3%	3.59
6	3.3%	2.2%	6.6%	28%	59.9%	3.39
7	5.5%	3.8%	9.3%	18.1%	63.2%	3.30
8	2.2%	2.2%	9.9%	50.5%	35.2%	3.14
9	5%	3.3%	6%	43.4%	46.7%	3.32
10	2.2%	2.2%	4.4%	27.5%	63.7%	3.48
11	2.7%	2.7%	6.6%	27.5%	60.4%	3.40
12	2.7%	0%	7.1%	19.8%	70.3%	3.55
13	2.2%	3.8%	2.7%	22%	68.7%	3.52
14	2.7%	4.4%	4.4%	20.9%	67.6%	3.46
15	3.3%	24.2%	5.5%	1.6%	65.4%	3.02
16	3.3%	4.9%	2.7%	30.2%	58.8%	3.36
17	1.6%	21.4%	4.4%	1.1%	71.4%	3.19
18	3.8%	3.8%	3.8%	28.6%	59.9%	3.37
19	14.8%	11.5%	15.4%	39%	19.2%	2.36
20	2.2%	2.2%	4.9%	43.4%	47.3%	3.31



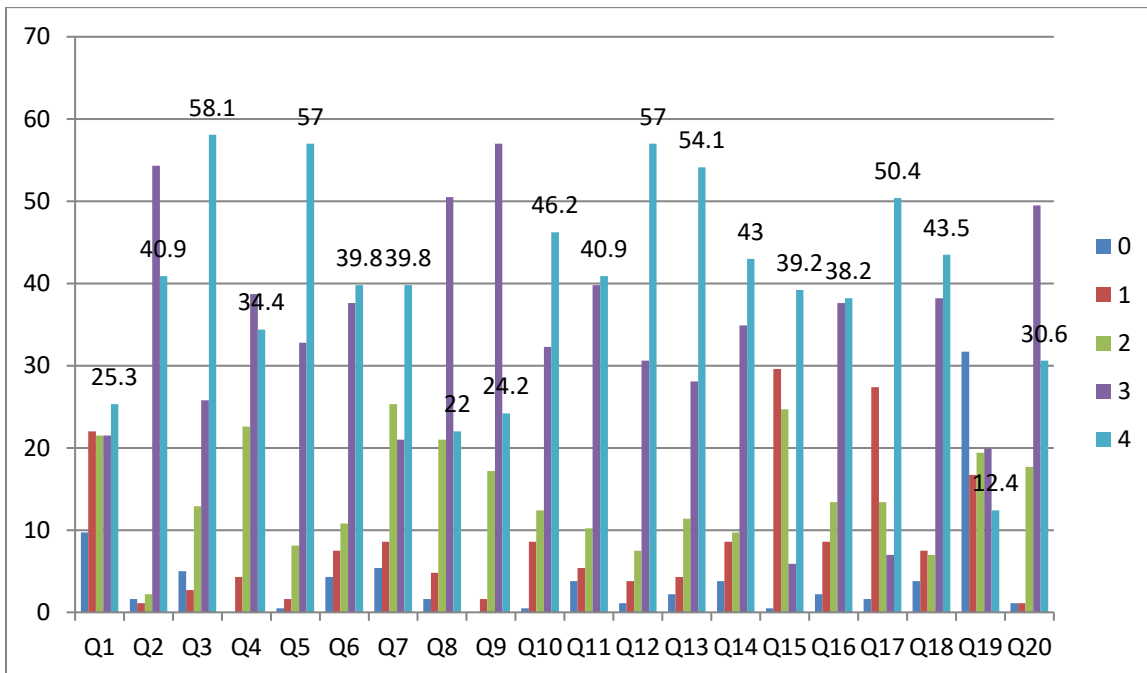
2020-21 STUDENTS

Q	0	1	2	3	4	Mean
1	2.3	6.2	13.5	33.4	44.6	3.1179
2	1.4	1.9	2.5	48.7	45.6	3.3518
3	2.4	1.7	7.2	16.2	72.5	3.5481
4	.5	3.8	14.9	38.1	42.8	3.1893
5	1.4	1.5	4.6	24.7	67.9	3.5619
6	3.2	3.8	7.8	28.2	57	3.3211
7	4.8	5.9	11.9	16.4	61.1	3.2299
8	3.2	2.9	11.4	51.4	31.1	3.0446
9	.7	3.1	7.8	45.2	43.2	3.2716
10	2.3	3.3	7.1	24.8	62.5	3.4202
11	3.2	4.6	7	26.1	59.2	3.3350
12	2.2	2.3	6	24.7	64.8	3.4767
13	2.7	3.8	4.7	22.4	65.7	3.4585
14	3.1	4.9	6.6	22.5	62.9	3.3736
15	2	27.5	11.8	3.8	55	2.8236
16	2.3	5.7	5.9	33.2	52.8	3.2854
17	.9	27.8	7.5	3.2	60.6	2.9465
18	2.8	6.8	5.6	31.5	53.3	3.2577
19	17	10.9	19.7	33.4	18.9	2.2626
20	1.1	3	9.1	42.8	44	3.2567



2021-22 STUDENTS

Q	0	1	2	3	4	Mean
1	9.7	22	21.5	21.5	25.3	2.3065
2	1.6	1.1	2.2	54.3	40.9	3.3172
3	5	2.7	12.9	25.8	58.1	3.3817
4	0	4.3	22.6	38.7	34.4	3.0323
5	.5	1.6	8.1	32.8	57	3.4409
6	4.3	7.5	10.8	37.6	39.8	3.0108
7	5.4	8.6	25.3	21	39.8	2.8118
8	1.6	4.8	21	50.5	22	2.8656
9	0	1.6	17.2	57	24.2	3.0376
10	.5	8.6	12.4	32.3	46.2	3.1505
11	3.8	5.4	10.2	39.8	40.9	3.0860
12	1.1	3.8	7.5	30.6	57	3.3871
13	2.2	4.3	11.4	28.1	54.1	3.2757
14	3.8	8.6	9.7	34.9	43	3.0484
15	.5	29.6	24.7	5.9	39.2	2.5376
16	2.2	8.6	13.4	37.6	38.2	3.0108
17	1.6	27.4	13.4	7	50.4	2.7742
18	3.8	7.5	7	38.2	43.5	3.1022
19	31.7	16.7	19.4	19.9	12.4	1.6452
20	1.1	1.1	17.7	49.5	30.6	3.0753



**2016-17 (No. of Respondents 41) TEACHERS**

	<b>Satisfactory</b>		<b>Unsatisfactory</b>	
9. What is your perception about the College Campus?	100%		00%	
10. What is your perception about the working of Management?	100%		00%	
11. What is your perception about the working of Head of the Institution?	100%		00%	
12. What is your perception about the working of Library?	97.6%		2.4%	
13. What is your perception about the working of Managerial/ Clerical Department?	95.1%		4.9%	
14. What is your perception about the working of Support Staff & Class IV?	95.1%		4.9%	
15. What is your perception about the working of Colleagues?	100%		00%	
16. What is your perception about the performance of Students?	65.9%		34.1%	
	<b>Excellent</b>	<b>V. Good</b>	<b>Good</b>	<b>Average</b>
24. Syllabus is suitable to the Course?	14.6%	43.9%	41.4%	00%
25. Syllabus is need based?	12.2%	34.1%	53.7%	00%
26. Aims and Objectives of the Syllabus are well defined and clear to Teachers & Students?	17.1%	48.8%	34.1%	00%
27. Course content is followed by Corresponding Reference Books/ Materials?	22%	36.6%	36.6%	4.9%
28. The course/ syllabus has 1 balance between Theory and Lab?	24.4%	31.7%	39%	4.9%

**2017-18 (No. of Respondents 48) TEACHERS**

	<b>Satisfactory</b>		<b>Unsatisfactory</b>	
9. What is your perception about the College Campus?	97.9%		2.1%	
10. What is your perception about the working of Management?	97.9%		2.1%	
11. What is your perception about the working of Head of the Institution?	97.9%		2.1%	
12. What is your perception about the working of Library?	97.9%		2.1%	
13. What is your perception about the working of Managerial/ Clerical Department?	93.8%		6.2%	
14. What is your perception about the working of Support Staff & Class IV?	95.8%		4.2%	
15. What is your perception about the working of Colleagues?	100%		00%	
16. What is your perception about the performance of Students?	66.7%		33.3%	
	<b>Excellent</b>	<b>V. Good</b>	<b>Good</b>	<b>Average</b>
24. Syllabus is suitable to the Course?	16.7%	45.8%	37.5%	00%
25. Syllabus is need based?	10.4%	45.8%	41.7%	2.1%
26. Aims and Objectives of the Syllabus are well defined and clear to Teachers & Students?	25%	41.7%	33.3%	00%
27. Course content is followed by Corresponding Reference Books/ Materials?	22.9%	43.8%	31.2%	2.1%
28. The course/ syllabus has 1 balance between Theory and	18.8%	43.8%	33.3%	4.2%

Lab?				
------	--	--	--	--

### 2018-19 (No. of Respondents 52) TEACHERS

	Satisfactory		Unsatisfactory	
9. What is your perception about the College Campus?	100%		0%	
10. What is your perception about the working of Management?	100%		0%	
11. What is your perception about the working of Head of the Institution?	100%		0%	
12. What is your perception about the working of Library?	96.2%		3.8%	
13. What is your perception about the working of Managerial/ Clerical Department?	92.3%		7.7%	
14. What is your perception about the working of Support Staff & Class IV?	92.3%		7.7%	
15. What is your perception about the working of Colleagues?	100%		0%	
16. What is your perception about the performance of Students?	57.7%		42.3%	
	<b>Excellent</b>	<b>V. Good</b>	<b>Good</b>	<b>Average</b>
24. Syllabus is suitable to the Course?	21.2%	38.5%	40.4%	0%
25. Syllabus is need based?	13.5%	40.4%	46.2%	0%
26. Aims and Objectives of the Syllabus are well defined and clear to Teachers & Students?	25%	50%	25%	0%
27. Course content is followed by Corresponding Reference Books/ Materials?	23.1%	48.1%	26.9%	1.9%
28. The course/ syllabus has balance between Theory and Lab?	21.2%	42.3%	30.8%	5.8%

### 2019-20 (No. of Respondents 56) TEACHERS

	Satisfactory		Unsatisfactory	
9. What is your perception about the College Campus?	100%		0%	
10. What is your perception about the working of Management?	98.2%		1.8%	
11. What is your perception about the working of Head of the Institution?	100%		0%	
12. What is your perception about the working of Library?	100%		0%	
13. What is your perception about the working of Managerial/ Clerical Department?	98.2%		1.8%	
14. What is your perception about the working of Support Staff & Class IV?	96.4%		3.6%	
15. What is your perception about the working of Colleagues?	98.2%		1.8%	
16. What is your perception about the performance of Students?	71.4%		28.6%	
	<b>Excellent</b>	<b>V. Good</b>	<b>Good</b>	<b>Average</b>
24. Syllabus is suitable to the Course?	21.4%	44.6%	32.1%	0%
25. Syllabus is need based?	21.4%	35.7%	39.3%	0%

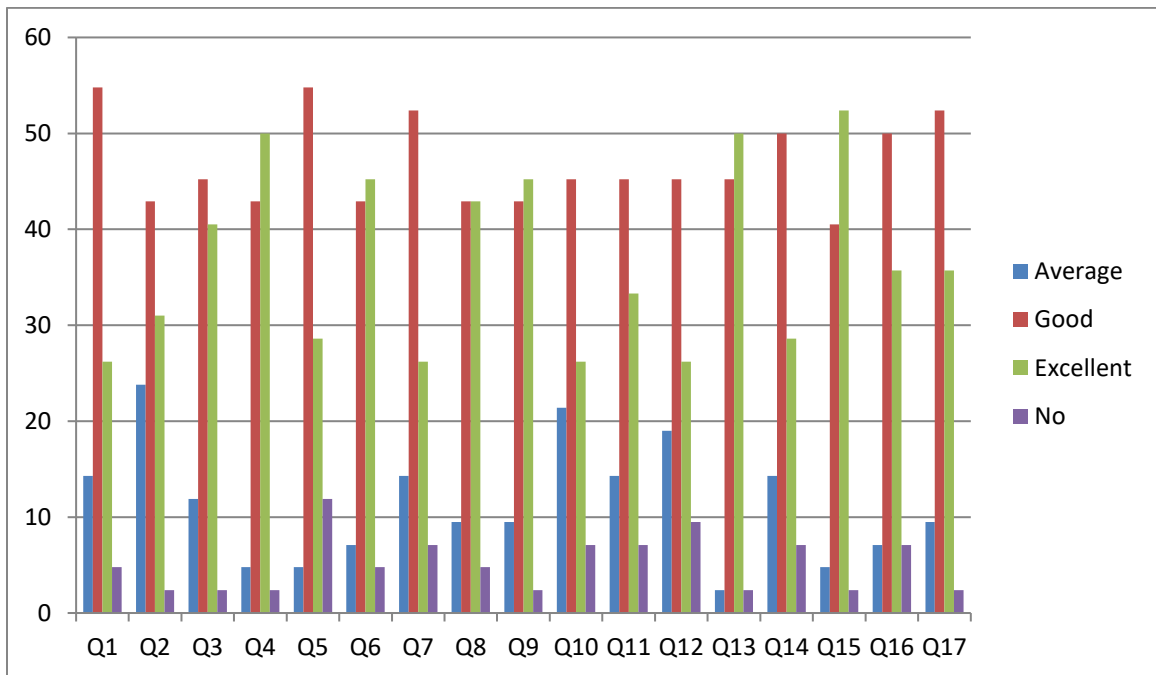
26. Aims and Objectives of the Syllabus are well defined and clear to Teachers & Students?	26.8%	46.4%	25%	1.8%
27. Course content is followed by Corresponding Reference Books/ Materials?	25%	50%	25%	0%
28. The course/ syllabus has 1 balance between Theory and Lab?	25%	41.1%	32.1%	1.8%

**2020-21 (No. of Respondents 187), TEACHERS**

	<b>Satisfactory</b>		<b>Unsatisfactory</b>	
9. What is your perception about the College Campus?	99.5%		.5%	
10. What is your perception about the working of Management?	99%		1%	
11. What is your perception about the working of Head of the Institution?	99.5%		.5%	
12. What is your perception about the working of Library?	98%		2%	
13. What is your perception about the working of Managerial/ Clerical Department?	94.9%		5.1%	
14. What is your perception about the working of Support Staff & Class IV?	94.9%		5.1%	
15. What is your perception about the working of Colleagues?	99.5%		.5%	
16. What is your perception about the performance of Students?	65.5%		34.5%	
	<b>Excellent</b>	<b>V. Good</b>	<b>Good</b>	<b>Average</b>
24. Syllabus is suitable to the Course?	18.8%	43.1%	37.6%	.5%
25. Syllabus is need based?	47.7%	39.1%	44.7%	1.5%
26. Aims and Objectives of the Syllabus are well defined and clear to Teachers & Students?	23.9%	46.7%	28.9%	.5%
27. Course content is followed by Corresponding Reference Books/ Materials?	23.4%	45.2%	29.4%	2%
28. The course/ syllabus has 1 balance between Theory and Lab?	22.3%	40.1%	33.5%	4.1%

2018-19 (PARENTS)

Q	Average	Good	Excellent	No Comment	Mean
1	14.3	54.8	26.2	4.8	1.50
2	23.8	42.9	31	2.4	1.76
3	11.9	45.2	40.5	2.4	1.62
4	4.8	42.9	50	2.4	1.57
5	4.8	54.8	28.6	11.9	1.26
6	7.1	42.9	45.2	4.8	1.55
7	14.3	52.4	26.2	7.1	1.48
8	9.5	42.9	42.9	4.8	1.57
9	9.5	42.9	45.2	2.4	1.62
10	21.4	45.2	26.2	7.1	1.62
11	14.3	45.2	33.3	7.1	1.55
12	19	45.2	26.2	9.5	1.55
13	2.4	45.2	50	2.4	1.52
14	14.3	50	28.6	7.1	1.50
15	4.8	40.5	52.4	2.4	1.60
16	7.1	50	35.7	7.1	1.43
17	9.5	52.4	35.7	2.4	1.52

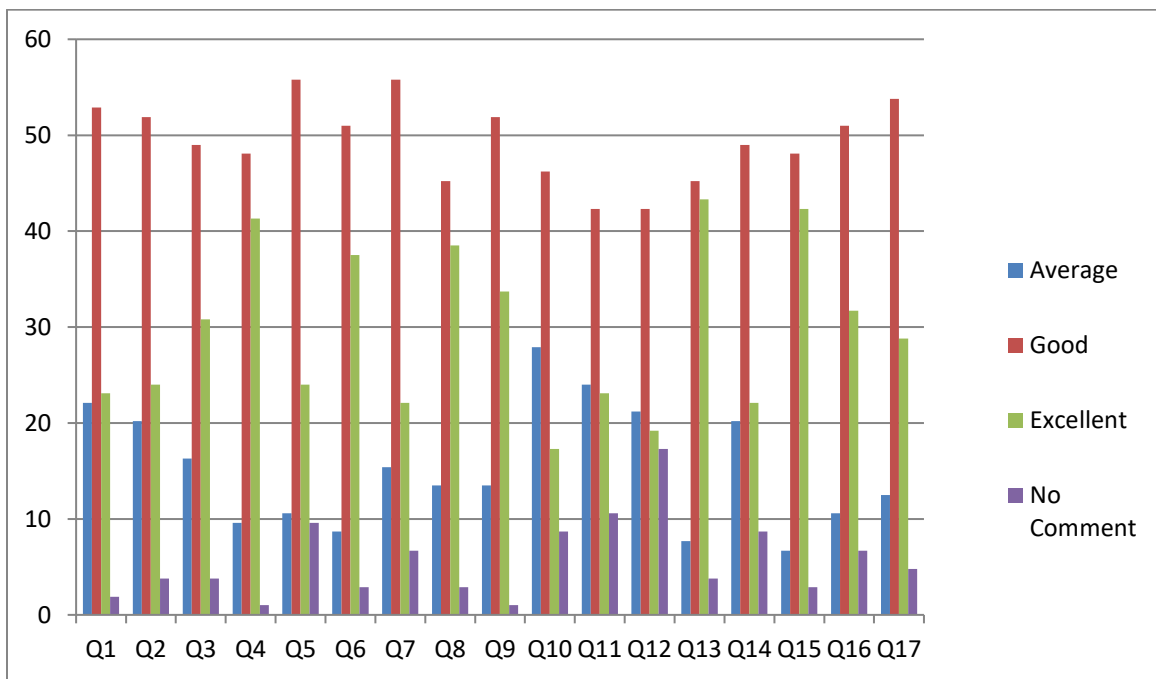




2019-20 (PARENTS)

Q	Average	Good	Excellent	No Comment	Mean
1	22.1	52.9	23.1	1.9	1.65
2	20.2	51.9	24	3.8	1.61
3	16.3	49	30.8	3.8	1.60
4	9.6	48.1	41.3	1	1.60
5	10.6	55.8	24	9.6	1.36
6	8.7	51	37.5	2.9	1.52
7	15.4	55.8	22.1	6.7	1.46
8	13.5	45.2	38.5	2.9	1.62
9	13.5	51.9	33.7	1	1.60
10	27.9	46.2	17.3	8.7	1.64
11	24	42.3	23.1	10.6	1.61
12	21.2	42.3	19.2	17.3	1.44
13	7.7	45.2	43.3	3.8	1.55
14	20.2	49	22.1	8.7	1.54
15	6.7	48.1	42.3	2.9	1.53
16	10.6	51	31.7	6.7	1.46
17	12.5	53.8	28.8	4.8	1.49

2019-20



2020-21

Q	Average	Good	Excellent	No Comment	Mean
1	21.8	51.9	23.8	2.4	1.65
2	19.4	54.9	23.3	2.4	1.60
3	12.1	53.9	28.6	5.3	1.48
4	8.7	48.5	42.7	0	1.60
5	11.2	56.8	25.2	6.8	1.41
6	8.7	54.4	35.9	1	1.52
7	15.5	57.3	24.8	2.4	1.53
8	8.3	49.5	39.3	2.9	1.53
9	9.7	53.9	33	3.4	1.49
10	27.2	45.6	18.4	8.7	1.64
11	16	46.6	23.3	14.1	1.41
12	20.4	44.2	18	17.5	1.41
13	8.3	47.6	39.8	4.4	1.52
14	16	54.9	19.4	9.7	1.42
15	6.8	52.4	37.9	2.9	1.49
16	13.1	53.9	25.7	7.3	1.45
17	11.2	62.1	25.7	1	1.47

(PARENTS)

