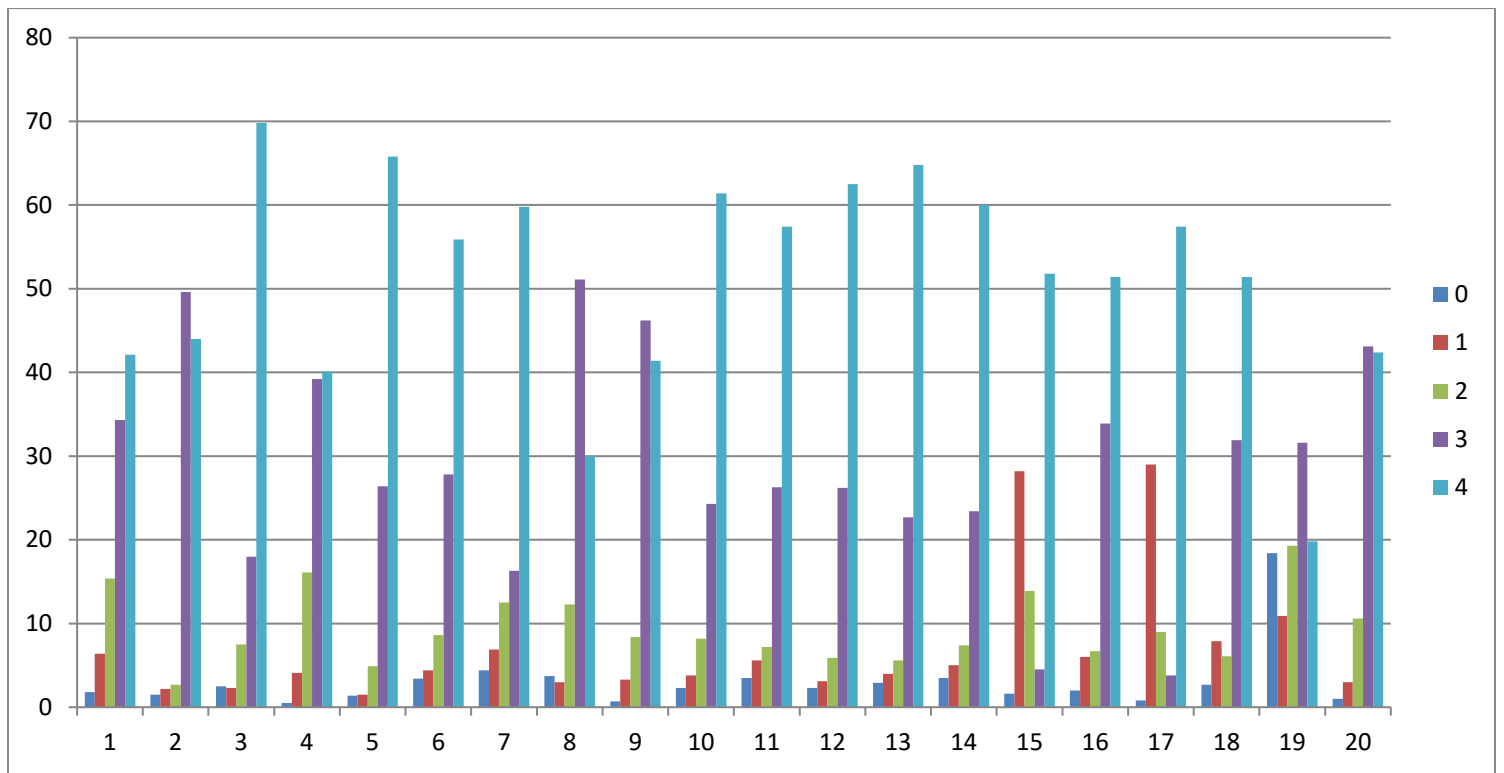


### College Students Survey (2019-20)

	<b>0</b>	<b>1</b>	<b>2</b>	<b>3</b>	<b>4</b>	<b>Mean</b>
<b>1</b>	13 1.8%	47 6.4%	113 15.4%	252 34.3%	309 42.1%	3.09
<b>2</b>	11 1.5%	16 2.2%	20 2.7%	364 49.6%	323 44.0%	3.32
<b>3</b>	18 2.5%	17 2.3%	55 7.5%	132 18.0%	512 69.8%	3.50
<b>4</b>	4 .5%	30 4.1%	118 16.1%	288 39.2%	294 40.1%	3.14
<b>5</b>	10 1.4%	11 1.5%	36 4.9%	194 26.4%	483 65.8%	3.54
<b>6</b>	25 3.4%	32 4.4%	63 8.6%	204 27.8%	410 55.9%	3.28
<b>7</b>	32 4.4%	51 6.9%	92 12.5%	120 16.3%	439 59.8%	3.20
<b>8</b>	27 3.7%	22 3.0%	90 12.3%	375 51.1%	220 30.0%	3.01
<b>9</b>	5 .7%	24 3.3%	62 8.4%	339 46.2%	304 41.4%	3.24
<b>10</b>	17 2.3%	28 3.8%	60 8.2%	178 24.3%	451 61.4%	3.39
<b>11</b>	26 3.5%	41 5.6%	53 7.2%	193 26.3%	421 57.4%	3.28
<b>12</b>	17 2.3%	23 3.1%	43 5.9%	192 26.2%	459 62.5%	3.43
<b>13</b>	21 2.9%	29 4.0%	41 5.6%	165 22.7%	472 64.8%	3.43
<b>14</b>	26 3.5%	37 5.0%	54 7.4%	172 23.4%	445 60.6%	3.33
<b>15</b>	12 1.6%	207 28.2%	102 13.9%	33 4.5%	380 51.8%	2.77
<b>16</b>	15 2.0%	44 6.0%	49 6.7%	249 33.9%	377 51.4%	3.27
<b>17</b>	6 .8%	213 29.0%	66 9.0%	28 3.8%	421 57.4%	2.88
<b>18</b>	20 2.7%	58 7.9%	45 6.1%	234 31.9%	377 51.4%	3.21
<b>19</b>	135 18.4%	80 10.9%	142 19.3%	232 31.6%	145 19.8%	2.23
<b>20</b>	7 1.0%	22 3.0%	78 10.6%	316 43.1%	311 42.4%	3.23



**Frequency percentage for categorical responses (2019-20)**